

# Construction and Design Manual Pharmacies

Building Typologies  
Public Health

Edited by  
Dörte Becker and  
Philipp Meuser



DOM  
publishers

Presexemplar

**PHARMACIES**  
CONSTRUCTION AND  
DESIGN MANUAL

**Editor:** Dörte Becker t, Philipp Meuser  
**Scientific advisor:** Prof. Franz Labryga  
**Coauthors:** Prof. Dr. Klaus Bergdolt, Klaus R. Bürger

**A** DOM  
publishers

**A** Proseexemplar



# INDEX

<b>PHILIPP MEUSER</b> THE HEALTH DESIGNERS PHARMACIES CAUGHT BETWEEN PROFESSIONAL TRADITION AND THE MODERN MARKET	6
<b>KLAUS BERGDOLT</b> FROM HERB GARDEN TO MAIL-ORDER PHARMACY HISTORIC FACTS ABOUT THE PHARMACY	12
<b>KLAUS R. BÜRGER</b> CORPORATE IDENTITY VISUALISATION OF THE ENTREPRENEURIAL PERSONALITY THROUGH THE ARCHITECTURAL LANGUAGE	20
<b>KLAUS R. BÜRGER</b> DESIGN FUNCTIONALITY, SHAPING, SENSITIVITY	26
<b>FRANZ LABRYGA</b> PRINCIPLES OF PLANNING PHARMACIES	32
PROJECTS	218
REGISTER	220
AUTHORS	221
SUBJECT INDEX	222
ARCHITECTS INDEX	223

<b>A-BASE ARCHITECTS</b> RHEINSTEIN-APOTHEKE, BERLIN	62
<b>ARTEC ARCHITEKTEN</b> "ZUM LÖWEN VON ASPERN", VIENNA	66
<b>BPW ARCHITEKTUR</b> APOTHEKE SÜD, ST. PÖLTEN VITAL APOTHEKE, VIENNA	72 76
<b>JÖRN BATHKE</b> ADLER APOTHEKE, KAMEN WILHELM APOTHEKE, BERLIN	80 84
<b>BRANDHERM+KRUMREY</b> DOCPLUS-APOTHEKE, BERLIN EINHORN APOTHEKE, HAMBURG MALTESER APOTHEKE, DUISBURG	88 94 100
<b>KLAUS R. BÜRGER</b> ALPIN APOTHEKE AM KLINIKUM, KEMPTEN APOTHEKE AM KLEMENSPLATZ, DÜSSELDORF BURG APOTHEKE, GREFRATH-OEDT OHM-APOTHEKE, ERLANGEN	108 114 120 124
<b>MICHAEL CLAASSEN</b> APOTHEKE SCHNAITH, BURGDORF	130
<b>3PO</b> PARK-APOTHEKE, POTSDAM	136
<b>RENATE HAWIG</b> APOTHEKE IM WESTEN, BIELEFELD TRI HAUS-APOTHEKE, ARNSBERG-NEHEIM	140 144
<b>ATELIER HEISS ARCHITEKTEN</b> AUGE-GOTTES-APOTHEKE, VIENNA APOTHEKE "ZU UNSERER LIEBEN FRAU BEI DEN SCHOTTEN", VIENNA	148 152
<b>HUBER RÖSSLER ARCHITEKTURBÜRO</b> ST. ANNA APOTHEKE <sup>1928</sup> , MUNICH	158
<b>IPPOLITO FLEITZ GROUP</b> LINDEN APOTHEKE, LUDWIGSBURG	166
<b>KINZO</b> ADLER-APOTHEKE, BERLIN	174
<b>THOMAS MAIERHOFER</b> EXPANSION OF PAULUS APOTHEKE "RED LOUNGE", VIENNA	178
<b>SANDER HOFRICHTER</b> APOTHEKE STADTKLINIK, FRANKENTHAL	182
<b>STADTGUT</b> HUMANITAS 21, VIENNA	188
<b>PIA UND MATTHIAS LANGMAYR, TP3 ARCHITEKTEN, FRANZ MOSER</b> EINHORN-APOTHEKE, LINZ	194
<b>TP3 ARCHITEKTEN, FRANZ MOSER</b> APOTHEKE "ZU MARIA TROST", KIRCHBERG AM WAGRAM	198
<b>FLORIAN BRAND, HANNES HUEMER, TP3 ARCHITEKTEN</b> ATRIUM APOTHEKE, SCHWANENSTADT	202
<b>THILO WOLF</b> APOTHEKE "SOLARCITY", LINZ VITAL APOTHEKE STREBERSDORF, VIENNA	208 212



**A-BASE  
ARCHITECTS**

**RHEINSTEIN-APOTHEKE  
BERLIN | G**

The Rheinsteine-Apotheke, located in a new health center, has white fitted furniture and bold red, orange, lilac, and blue accents. The low budget involved, and the location alongside the front display window, posed a particular challenge for the architects: The pharmacy needed to look bright and modern while conveying gravitas and professional expertise.

Colour coding was used to create a simple and attractive product display, visible for the entire length of the store through floor-level windows. Indirectly lit shelves set into the wall add horizontal emphasis, while the plexiglass shelf signage uses the same system of colours to distinguish between different product categories and make the display more attractive.

The wall of shelves extends behind the angled cash desk, providing space for behind-the-counter products and also forming the entrance to the private areas of the pharmacy. Here, the entire front wall is dominated by a brightly coloured alphabetic storage drawer unit. There is also an assay area, work desks, a prescription area, and a controlled drug storage area. The screened-off stairs lead to the upstairs office, kitchen, and lounge for night staff.



NEW CONSTRUCTION

URBAN PHARMACY

MEDIUM-SIZED PHARMACY

URB URB

MED

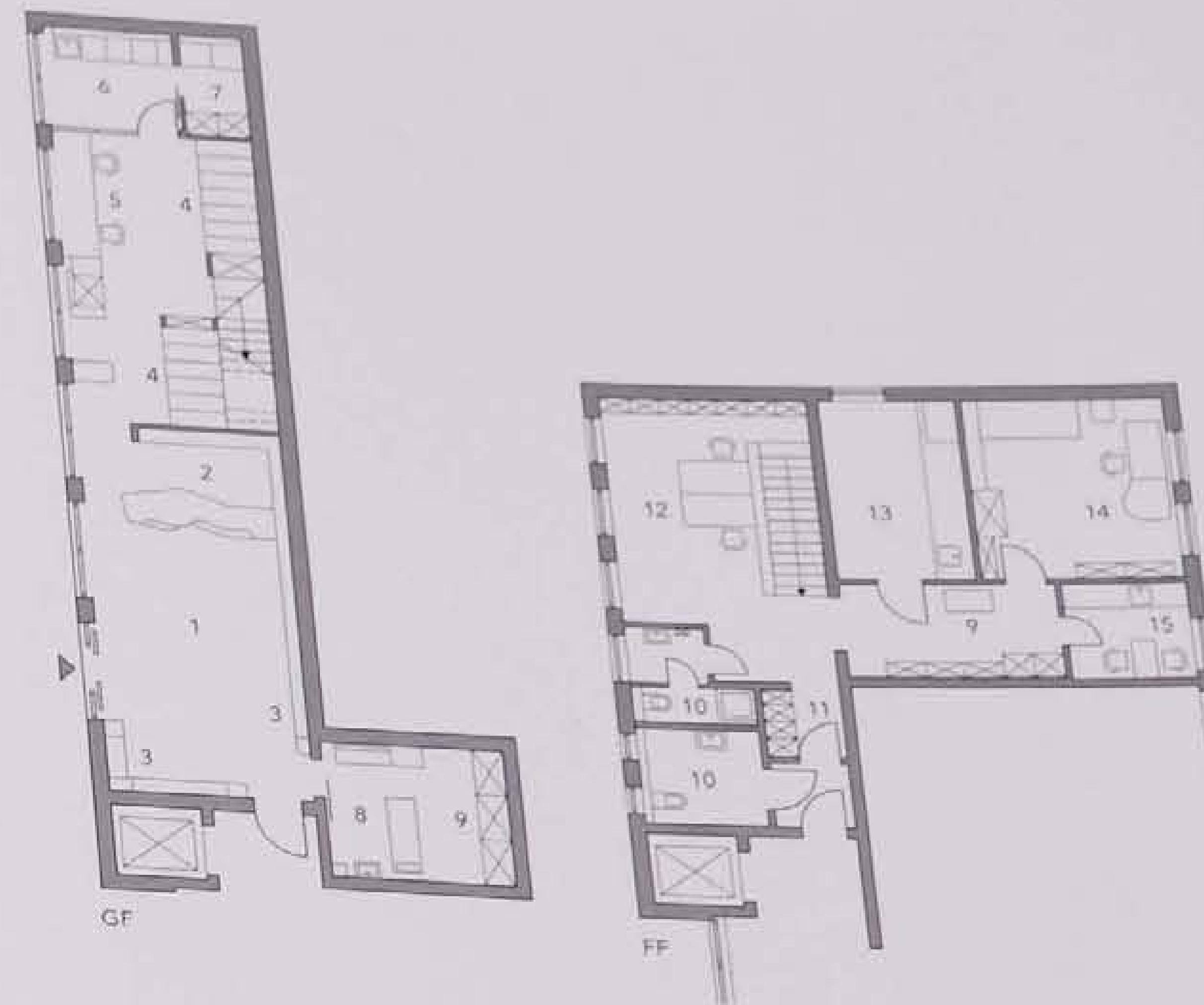
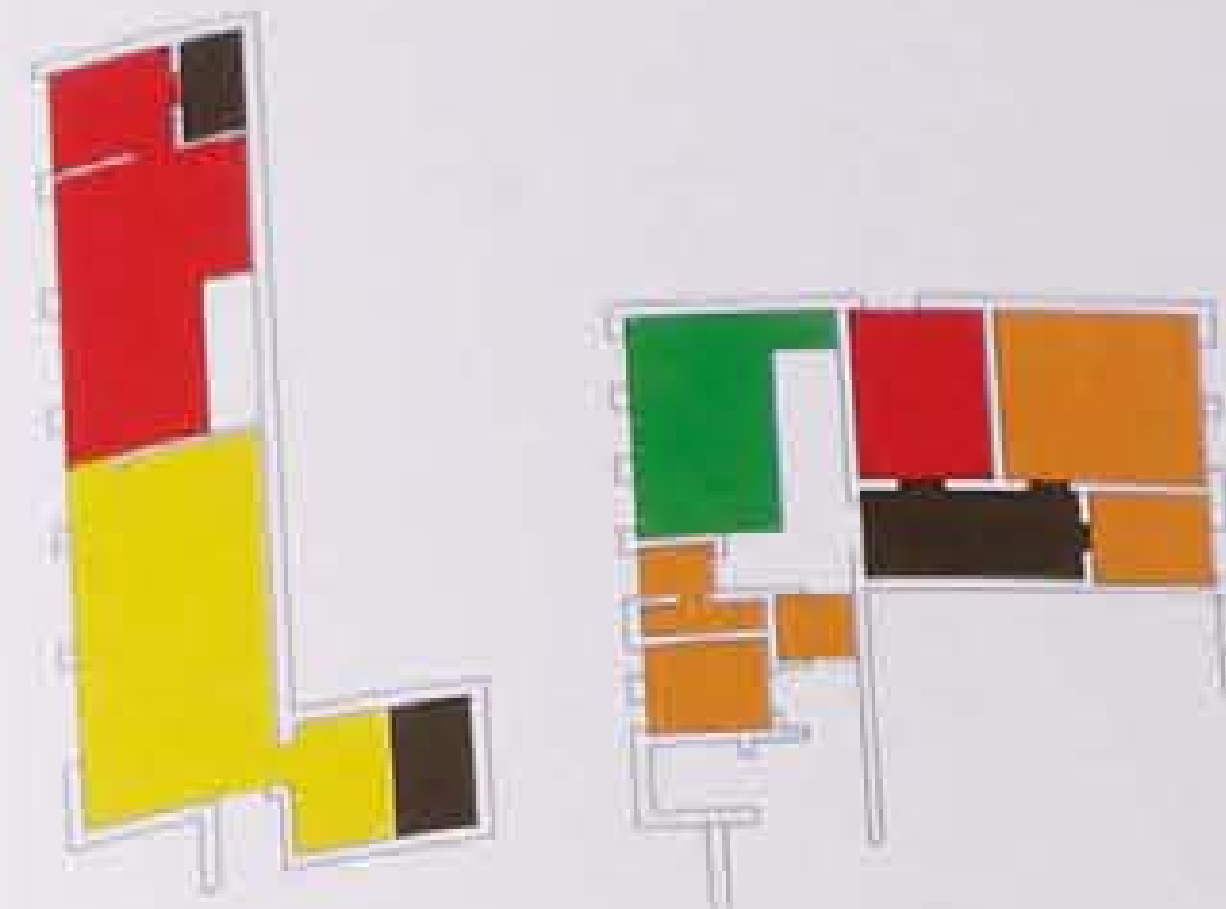
LAR

62 63





64 65



Client | operator Kirsten Wieker  
 Design phase 10 2004–12 2004  
 12 2004–01 2005  
 Built 205 sqm  
 Gross floor area 172 sqm  
 Usable surface 716 cbm  
 Gross volume 90,000 €  
 Construction cost 90,000 €  
 Total cost

- a The shelves set into the wall add horizontal emphasis to the space.
- b Each group of products has its own plexiglass sign.
- c Indirect lighting shows off the products to their best advantage.
- d The pharmacy's effect is achieved using white fitted furniture and bold accents of colour.

Diagrammatic plans, to scale 1:400  
 Floor plans, to scale 1:200

**Floor layout**

- 1 Sales area
- 2 Cash desk
- 3 Self-service area
- 4 Alphabetic storage
- 5 Workstation
- 6 Prescription area
- 7 Drug storage
- 8 Consultations
- 9 Product storage
- 10 Bathroom
- 11 Staff changing
- 12 Office
- 13 Laboratory
- 14 Night shift room
- 15 Kitchen

The pharmacy is on two stories, with the upstairs laboratory and storage accessed via a single central flight of stairs or an outside elevator. The storage area in the consulting room is inconveniently located.

**Usable areas**

Sales	yellow	46 sqm	27 %
Service	red	48 sqm	28 %
Administration	green	19 sqm	11 %
Employee areas	orange	38 sqm	22 %
Supply   disposal	brown	21 sqm	12 %
Total		172 sqm	100 %

**Other key information**

Catchment radius	
Distance to nearest pharmacy	Not known
Nearest health facility	
Number of items in stock	
Stock turnover rate	
Proportion produced in-house	
Drugs produced in-house	
Proportion delivered externally	
Type of customers supplied	
Number of staff	
Prescriptions filled per day	
Proportion of special services	
Technical facilities	
Nature of special services	

URB  
URB  
MED  
LAR